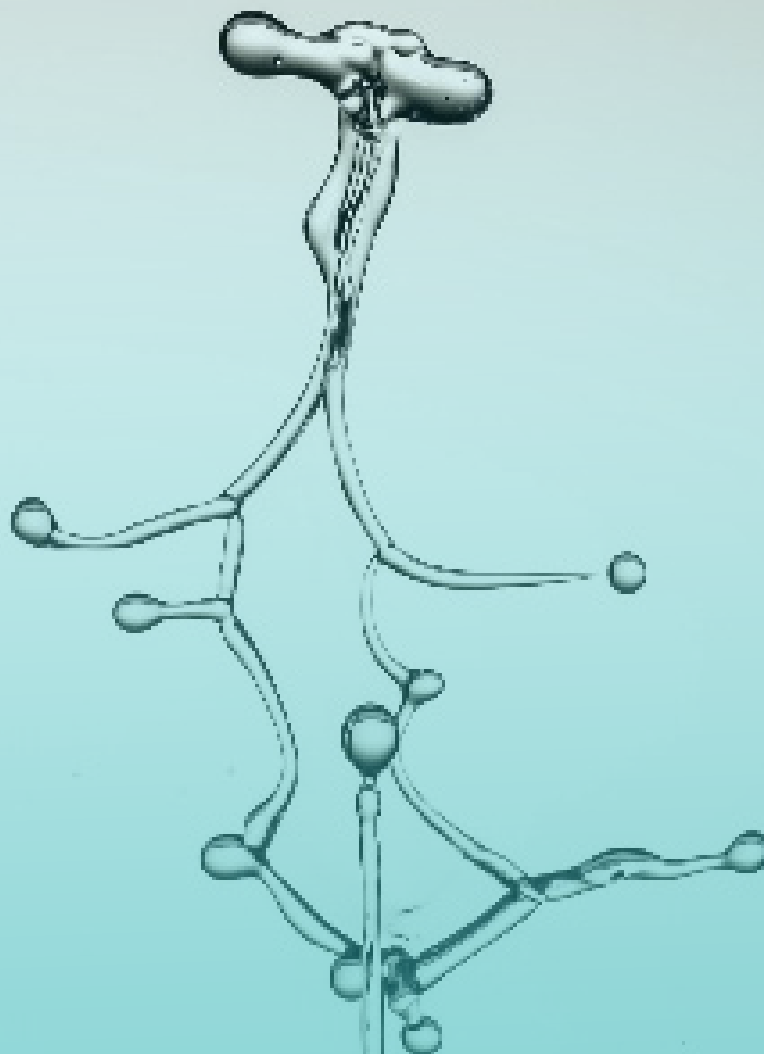


novasina

Catalogue Lab 2020

Water Activity - Laboratory Instruments



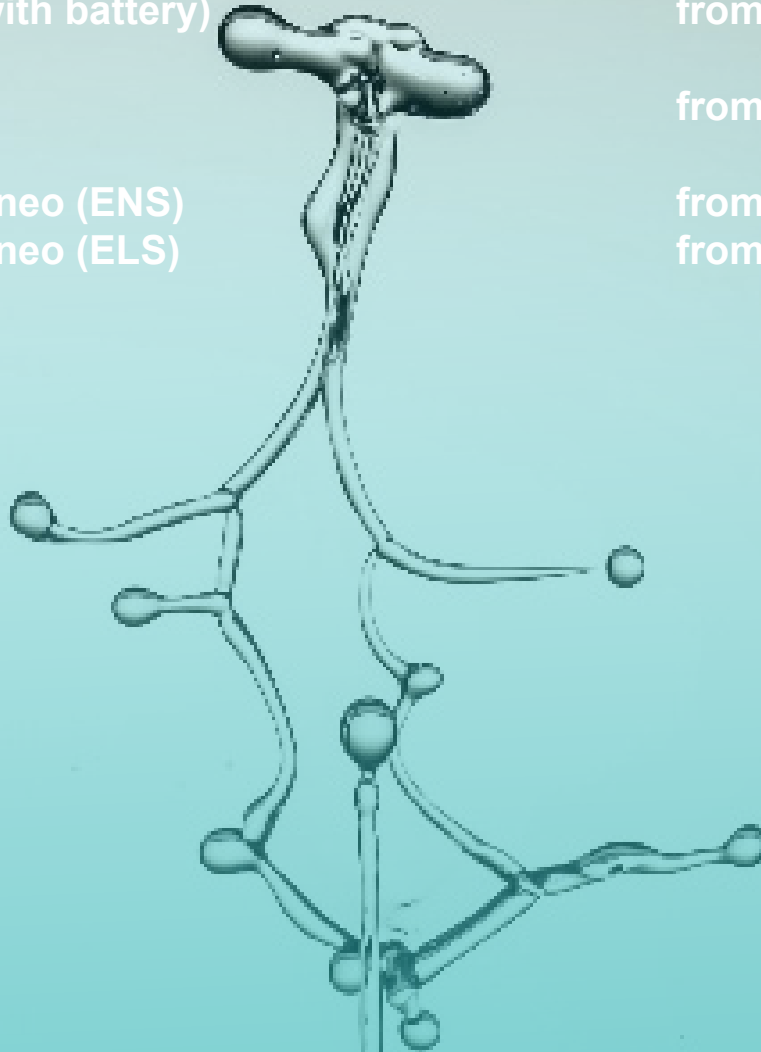
Novasina AG, Neuheimstrasse 12, 8853 Lachen (Switzerland)

Tel: +41 55 642 67 67

lab@novasina.ch, www.novasina.ch

Index

ClimMate Set aw	from Page 3
LabStart-aw	from Page 7
LabSwift-aw (without battery)	from Page 10
LabSwift-aw (with battery)	from Page 10
LabTouch-aw	from Page 14
LabMaster-aw neo (ENS)	from Page 18
LabMaster-aw neo (ELS)	from Page 18



ClimMate Set aw

Water Activity Measurement

Handheld meter for large samples

Hand-held instrument with large sample chamber to measure larger sample quantities or even bulky samples. Can be used in raw material control or in production

In order to be able to measure a reproducible sample, sometimes larger sample quantities are necessary. In this case the ClimMate Set-aw provides the solution. The large sample chamber can also be used to measure larger sample quantities or pieces. However, the chamber has no temperature control and the measuring device has no balance control. As the first AW-measurement value indication this device is very suitable and can also be used as a portable version thanks to the battery power supply.



Meter Specifications

	ClimMate-aw Set
Versions	N/A
Mains connection	4 x 1.5 VDC Alkaline batteries or adapter 5 VDC
Power supply	90...264 VAC 50/60 Hz
Display	Capacitive TFT, 240 x 320px
Communication	USB for PC connection
Housing	> Plastic housing, Weight: 0.2kg > Dimensions (L x W x H) = 62 x 170 x 34mm
Measuring chamber volume	480mL
Dimensions sample container	diameter 80mm x height 95mm
Protection class	IP54
21CFR 11	not compliant

Measurement Specifications

	parameter	
	Water activity	Temperature
Measuring principle	electrolytic	NTC
Measuring range	0.03...1.00aw	0...50°C (32...122°F)
Adjustment range	0.11...0.90aw	N/A
Resolution	0.01aw	0.1°C
Accuracy	+/-0.02aw within calibration range	+/-0.15°C
Precision	+/-0.01aw within the adjustment range*	+/-0.1°C
Repeatability	+/-0.01aw within calibration range *	N/A
Temperature control	no temperature control and no moisture equilibrium detection available	
Adjustment point (%rH)	Only possible with nSoft-CAL: 11%, 33%, 53%, 75%, 90%	

Scope of Application:





ClimMate-Set aw
260 1288

Set ClimMate with nSens-HT rF/T sensing element

- Multi-function measuring device ClimMate
- USB connection cable 1.8m
- nSens cable extension 2m
- Sample beaker for large volumes
- 4x alkaline batteries LR6 AA 1,5V
- nSens-HT-ENS sensor incl. nLink-UMB adapter
- Humidity standards SAL-SC 33% & 75%rh
- Adapter SAL-SC for nSens-HT probes
- Factory test certificates and instructions
- Transport case for instrument and sensor
- SmartGraph III software

Humidity Generators SAL-SC with factory certificate

Moisture standards based on saturated salt solutions in plastic cylinders, with permeable membrane. Each salt is stored in a well closable container.

Consult the instruction manual of the instrument to see which points can be calibrated. The other SAL-SC can be used for verification.

humidity values	P/N	Name	Calibration	Verification
6 %	260 0978	SAL-SC 6		X
11 %	111 0885	SAL-SC 11	X	X
33 %	111 0855	SAL-SC 33	X	X
53 %	111 0857	SAL-SC 53	X	X
58 %	260 0219	SAL-SC 58		X
75 %	111 0859	SAL-SC 75	X	X
84 %	251 8965	SAL-SC 84		X
90 %	111 0896	SAL-SC 90	X	X
97 %	251 8966	SAL-SC 97		X



SAL-SC with factory certificate

Humidity Generators SAL-SC with UKAS certificate

Moisture standards based on saturated salt solutions in plastic cylinders, with moisture permeable membrane. Each salt is delivered with UKAS certificate, in a well closable container.

Consult the instruction manual of the instrument to see which points can be calibrated. The other SAL-SC can be used for verification.

humidity values	P/N	Name	Calibration	Verification
11 %	111 1044	SAL-SC 11	X	X
33 %	111 1037	SAL-SC 33	X	X
53 %	111 1040	SAL-SC 53	X	X
75 %	111 1035	SAL-SC 75	X	X
84 %	260 1272	SAL-SC 84		X
90 %	111 1032	SAL-SC 90	X	X
97 %	260 1275	SAL-SC 97		X



SAL-SC with UKAS certificate



nSoft-CAL Set
260 1094

nSoft-CAL Set

Windows based software for the calibration and adjustment of nSens probes on the PC. Runs on Windows 98/2000/XP/Vista/Windows 7 & 8. Including Link-USB connection cable, 1.8m length.

USB power supply to ClimMate

Power supply for external power supply with USB plug Connection for ClimMate. Internal batteries are not discharged USB cable is included in ClimMate Set aw!

Input: 100...260V AC
50/60 Hz
Output: +5V DC USB
1200mA / 6W



USB power supply to ClimMate
260 0872



Adapter SAL-SC / nSens
260 1143

Adapter SAL-SC

for nSens-xx probes with \varnothing 13mm
Plastic adapter for humidity standards as reduction and radial seal on the extent of the respective sensor.

nCap-PS protective filter cap

Silver oxide coated dust protection filter element
For mechanical protection of the sensor and protection against dust.
Additional basic chemical protection of the sensor.



N-Cap-PS filter
260 1147

nSens-HT-ENS probe

Digital nSens-HT humidity & temperature sensor with resistive electrolytic humidity and NTC temperature sensor. With nCap-PS protective filter cap. The calibration points are stored directly in the sensor. Calibration and adjustment is carried out with separately available calibration software nSoft-CAL. The sensor is pluggable and can be replaced very quickly and easily.



nSens-HT-ENS
260 1171



Sample beaker
260 1254

Sample beaker

For samples with large volumes such as grain, granules, powders etc. Including screw connection for fastening the nSens-HT-ENS probe.

Dimensions: Ø80mm x height 95mm
Volume: approx. 400 cm³
Material: Polypropylene

LabStart-aw

Water Activity Measurement

Ideal for the first step

Inexpensive AW meter for measurements in the low to medium AW range, without already having high demands on accuracy and reproducibility.

Test water activity measurement without having to spend a whole fortune on a measuring device? The LabStart-aw is exactly the right device for this situation. Or even if the demands on accuracy and reproducibility are rather low. Although the device is designed as a „starter“, proven Novasina technology can be found inside, especially the resistive electrolytic sensor.



Meter Specifications

	LabStart-aw
Versions	N/A
Mains connection	5 VDC, +/-6%, max. Power consumption 10W
Power supply	90...264 VAC 50/60 Hz
Display	LC-display, dimensions: 35 x 69mm
Communication	not possible
Housing	> Two-part PC/ABS housing, weight: 1.2kg > Dimensions (L x W x H) = 225x140x85mm
Measuring chamber volume	15mL
Dimensions sample container	diameter 30mm x height 14mm
Protection class	IP22
21CFR 11	not compliant

Measurement Specifications

	parameter	
	Water activity	Temperature
Measuring principle	electrolytic	NTC
Measuring range	0.03...1.00aw	0...30°C (59...86°F)
Adjustment range	0.33...0.75aw	N/A
Resolution	0.01aw	0.1°C
Accuracy	+/-0.03aw within calibration range	+/-0.15°C
Precision	+/-0.01aw within the adjustment range *	+/-0.1°C
Repeatability	+/-0.01aw within calibration range *	N/A
Temperature control	no temperature control available	
Adjustment point (%rH)	33%, 75%	

Scope of Application:



Grain

Convenience products

Coffee & Tea

Powder & Spices



LabStart-aw

- Measuring instrument LabStart-aw
- Euro or US mains adapter
- 1 piece SAL-T 75% rH
- 20 Sample dishes ePW
- Replacement pre-filter white (5 Stk.)
- tension ring
- Factory calibration certificate
- USB stick with manual

LabStart-aw

260 0992

Universal power supply / adapter

Power supply for LabStart / LabSwift / LabTouch

Attention: Please use the power adapter supplied by Novasina only.



Power supply unit EU/US

260 0505



SAL-T salt standards

SAL-T salt standards

Moisture standards based on saturated salt solutions in plastic tablets, with a moisture-permeable membrane. Each salt is delivered in a well closing can.

Consult the instruction manual of the instrument to see which points can be calibrated. The other SAL-T can be used for verification.

humidity values	P/N	Name	Calibration	Verification
4 %	111 7440	SAL-T 4		X
6 %	111 6453	SAL-T 6		X
11 %	111 0930	SAL-T 11		X
23 %	260 0960	SAL-T 23		X
33 %	111 0932	SAL-T 33	X	X
43 %	260 0961	SAL-T 43		X
53 %	111 0934	SAL-T 53		X
58 %	260 0189	SAL-T 58		X
75 %	111 0936	SAL-T 75	X	X
84 %	111 9886	SAL-T 84		X
90 %	111 0938	SAL-T 90		X
97 %	111 9887	SAL-T 97		X
100 %	260 1591	SAL-T 100		X

ePW Dispenser

5 dispensers with 20 pcs. each Disposable sample trays and a holder for the dispensers



ePW Dispenser

260 1584



SAL-T/C salt standards UKAS

with European recognised certificate

Moisture standards based on saturated salt solutions in plastic tablets, with a moisture-permeable membrane. Each salt is delivered with UKAS certificate, in a well closable container.

humidity values	P/N	Name	Calibration	Verification
6 %	111 7000	SAL-T/C 6		X
11 %	111 1056	SAL-T/C 11		X
33 %	111 1057	SAL-T/C 33	X	X
53 %	111 1060	SAL-T/C 53		X
58 %	260 0190	SAL-T/C 58		X
75 %	111 1063	SAL-T/C 75	X	X
84 %	260 0276	SAL-T/C 84		X
90 %	111 1065	SAL-T/C 90		X
97 %	111 9981	SAL-T/C 97		X

SAL-T/C salt standards UKAS

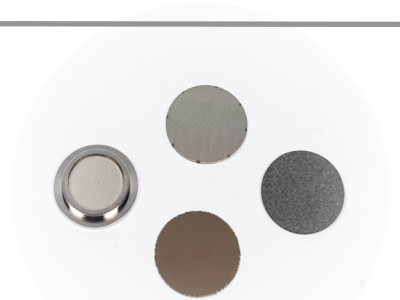
Consult the instruction manual of the instrument to see which points can be calibrated. The other SAL-T can be used for verification.

Chemical protection filters

to protect the measuring cells

Various filters to protect the sensor against aggressive vapours, alcohols, glycols, etc.

For detailed information on the most suitable filter for your application, please consult the Novasina filter data sheet.



Special protection filters

111 1001 -> eVC-21 (10 pcs)

111 1003 -> eVC-26 (10 pcs)

111 7212 -> Redox (1 pcs)

111 0995 -> eVALC (2 pcs)



Spare parts for measuring head LabStart-aw / LabSwift-aw / LabTouch-aw

1 Sealing ring

2 pre-filters white, 5 pcs.

3 Tension ring for fixing protection filters

Spare parts for measuring head

260 0211 Sealing ring: 1

260 0183 Prefilter white: 2

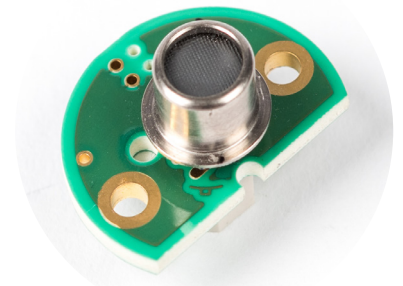
260 0210 Tension ring: 3

CM-4 measuring cell

Only for LabStart-aw!

Intelligent and factory-calibrated measuring cell system based on the unique Novasina „Novalyte“ technology. The built-in active heating system.

Caution: Never touch the front area of the measuring cell with hands or any other object!



CM-4 measuring cell

260 0995

LabSwift-aw

Water Activity Measurement

Once portability is required

The LabSwift-aw with rechargeable battery offers this possibility. The instrument is designed for daily use and for samples in the lower to medium aW range.

Looking for a water activity instrument with local flexibility? Then the LabSwift-aw is exactly what you need. As an option with rechargeable battery, the device can be placed anywhere. Suitable for products such as powder or dried fruits with low to medium aW-values, as the measuring device does not have a temperature stabilisation of the measuring chamber. The proven resistive electrolytic measuring technology of Novasina is also implemented here and guarantees reliable and accurate measurement results.



Meter Specifications

	LabSwift-aw
Versions	With and without battery pack
Mains connection	5 VDC, +/-6%, max. Power consumption 10W
Power supply	90...264 VAC 50/60 Hz
Display	LC-display, dimensions: 35 x 69mm
Communication	SD/SD _{HC} - card
Housing	> Two-part PC/ABS housing, weight: 1.2kg > Dimensions (L x W x H) = 225x140x85mm
Measuring chamber volume	15mL
Dimensions sample container	Durchmesser 30mm x height 14mm
Protection class	IP22
21CFR 11	partially compliant

Measurement Specifications

	parameter	
	Water activity	Temperature
Measuring principle	Electrolytic	surface IR and NTC
Measuring range	0.030...1.000aw	5...45°C (41...113°F)
Adjustment range	0.110...0.900aw	N/A
Resolution	0.001aw	0.1°C
Accuracy	+/-0.010aw within calibration range	+/-0.15°C
Precision	+/-0.003aw within the adjustment range*	+/-0.1°C
Repeatability	+/-0.002aw within calibration range*	N/A
Temperature control	no temperature control available	
Adjustment point (%rH)	11%, 33%, 53%, 58%, 75%, 84%, 90%	

Scope of Application:





LabSwift-aw (without battery)
260 0177

LabSwift-aw

- Measuring instrument LabSwift-aw
- Euro or US mains adapter
- SD card 8 GB
- 3 pieces SAL-T: 11, 58, 84% rH
- 40 sample dishes ePW
- Replacement pre-filter white (5 pcs.)
- tension ring
- operating instructions
- Factory test certificate
- USB stick with manual

LabSwift-aw with Battery

- Measuring instrument LabSwift-aw
- Rechargeable battery incl. charging electronics
- Euro or US mains adapter
- 3 pieces SAL-T: 11, 58, 84% rH
- SD card 8 GB
- 40 sample dishes ePW
- Replacement pre-filter white (5 pcs.)
- Tension ring
- operating instructions
- Factory test certificate
- USB stick with manual



LabSwift-aw (with battery)
260 0179

Universal power supply / adapter

Power supply for LabStart / LabSwift / LabTouch
Attention: Please use the power adapter supplied by Novasina only.

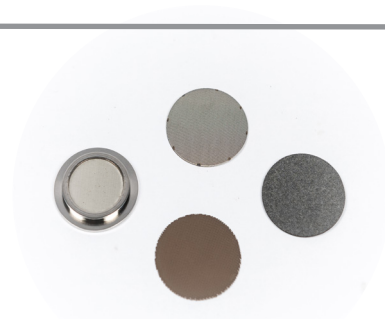


Power supply EU/US
260 0505

Special protective filter to protect the measuring cells

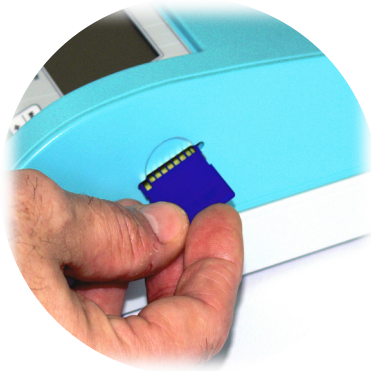
Various filters to protect the sensor against aggressive vapours, alcohols, glycols, etc.

For detailed information on the most suitable filter for your application, please consult the Novasina filter data sheet.



Special protection filters

- 111 1001 -> eVC-21 (10 pcs)
- 111 1003 -> eVC-26 (10 pcs)
- 111 7212 -> Redox (1pcs)
- 111 0995 -> eVALC (2 pcs)



SD card

SD card for saving all measurement data and protocols. The data can be evaluated by spreadsheet programs. Memory: 8GB.

SD card
260 0193

ePW Dispenser

5 dispensers with 20 pcs. each Disposable sample trays and a holder for the dispensers



ePW Dispenser
260 1584

CM-2 Measuring cell

Interchangeable intelligent and factory-calibrated measuring cell system based on Novasina „Novalyte“ technology. The active heating prevents condensation on the moisture measuring element.

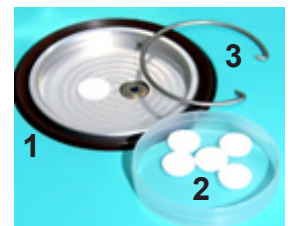
Caution: Never touch the front area of the measuring cell with your hands or any other object!



CM-2 Measuring cell
111 9983

Spare parts for measuring head LabStart-aw / LabSwift-aw / Lab-Touch-aw

- 1 Sealing ring
- 2 pre-filters white, 5 pcs.
- 3 Tension ring for fixing protection filters



Spare parts for measuring head

- 260 0211 Sealing ring: 1
- 260 0183 Prefilter white: 2
- 260 0210 Tension ring: 3

SAL-T salt standards

Moisture standards based on saturated salt solutions in plastic tablets, with a moisture-permeable membrane. Each salt is delivered in a well closing can.

Consult the instruction manual of the instrument to see which points can be calibrated. The other SAL-SC can be used for verification.

humidity values	P/N	Name	Calibration	Verification
4 %	111 7440	SAL-T 4		X
6 %	111 6453	SAL-T 6		X
11 %	111 0930	SAL-T 11	X	X
23 %	260 0960	SAL-T 23		X
33 %	111 0932	SAL-T 33	X	X
43 %	260 0961	SAL-T 43		X
53 %	111 0934	SAL-T 53	X	X
58 %	260 0189	SAL-T 58	X	X
75 %	111 0936	SAL-T 75	X	X
84 %	111 9886	SAL-T 84	X	X
90 %	111 0938	SAL-T 90	X	X
97 %	111 9887	SAL-T 97		X
100 %	260 1619	SAL-T 100		X



SAL-T salt standards

SAL-T/C salt standards UKAS

with European recognised certificate

Moisture standards based on saturated salt solutions in plastic tablets, with a moisture-permeable membrane. Each salt is delivered with UKAS certificate, in a well closable container.

Consult the instruction manual of the instrument to see which points can be calibrated. The other SAL-SC can be used for verification.

humidity values	P/N	Name	Calibration	Verification
6 %	111 7000	SAL-T/C 6		X
11 %	111 1056	SAL-T/C 11	X	X
33 %	111 1057	SAL-T/C 33	X	X
53 %	111 1060	SAL-T/C 53	X	X
58 %	260 0190	SAL-T/C 58	X	X
75 %	111 1063	SAL-T/C 75	X	X
84 %	260 0276	SAL-T/C 84	X	X
90 %	111 1065	SAL-T/C 90	X	X
97 %	111 9981	SAL-T/C 97		X



SAL-T/C salt standards

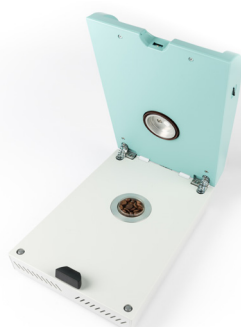
LabTouch-aw

Water Activity Measurement

Ideal for laboratory and production

Flexible and fast water activity meter with large touch screen. Easy to use, very well suited for AT-Line measurements in production or for the exact determination of AW-values in the QC-Lab.

aW measuring instrument for many samples, regardless of whether liquid, gel-like or solid. With its ergonomic design and touch screen, it makes water activity measurement easier than ever before. A partial temperature regulation as well as integrated sample surface temperature measurement enable accurate and reproducible measurements. Different measuring modes offer the user the possibility to carry out either a fast measurement on the production line or an exact AW determination for quality assurance of the products.



Meter Specifications

	LabTouch-aw
Versions	N/A
mains connections	5 VDC, +/-6%, max. Power consumption 10W
Power supply	90...264 VAC 50/60 Hz
Display	4.3" LC-colour display
Communication	> USB for PC / printer (Advanced) > SD/SD _{HC} -card (Basic and Advanced)
Housing	> Two-part PC/ABS housing, weight: 2.8kg > Dimensions (L x W x H) = 200x285x105mm
Measuring chamber volume	15mL
Dimensions sample container	diameter 30mm x height 14mm
Protection class	IP22
21CFR 11	partially compliant

Measurement Specifications

	parameter	
	Water activity	Temperature
Measuring principle	Electrolytic	Surface IR and NTC
Measuring range	0.030...1.000aw	5...45°C (41...113°F)
Adjustment range	0.110...0.970aw	N/A
Resolution	0.001aw	0.1°C
Accuracy	+/-0.005aw within calibration range	+/-0.10°C
Precision	+/-0.003aw within the adjustment range*	+/-0.1°C
Repeatability	+/-0.002aw within calibration range*	N/A
Temperature control	Programmable measuring temperature in the range of 15...30°C (59...86°F)*	
Adjustment point (%rH)	11%, 33%, 53%, 58%, 75%, 84%, 90%, 97%	

Scope of Application:





LabTouch-aw with CM-2 Sensor

- Measuring instrument LabTouch-aw advanced
- Euro or US marks adapte
- SD Memory card 8 GB
- 4 SAL-T: 33, 58, 75, 84% rh
- 40 ePW sample dishes
- 5 x replacement prefilters white
- Tansion ring
- operating instructions on USB stick
- Factory calibration certificate
- Quick-Mode for fast measurement

LabTouch-aw with CM-2 Sensor

260 1916

LabTouch-aw with CM-3 Sensor

- Measuring instrument LabTouch-aw advanced
- Euro or US marks adapte
- SD Memory card 8 GB
- 4 SAL-T: 33, 58, 75, 84% rh
- 40 ePW sample dishes
- 5 x replacement prefilters white
- Tansion ring
- operating instructions on USB stick
- Factory calibration certificate
- Quick-Mode for fast measurement



LabTouch-aw with CM-3 Sensor

260 1917



Universal power supply / adapter

Power supply for LabStart / LabSwift / LabTouch
Attention: Please use the power adapter supplied by Novasina only.

Power supply EU/US

260 0505

ePW Dispenser

5 dispensers with 20 pcs. each. Disposable sample trays
and a holder for the dispensers



ePW Dispenser

260 1584



SAL-T salt standards

SAL-T salt standards

Moisture standards based on saturated salt solutions in plastic tablets, with a moisture-permeable membrane. Each salt is delivered in a well closable container.

Consult the instruction manual of the instrument to see which points can be calibrated. The other SAL-T can be used for verification.

humidity values	P/N	Name	Calibration	Verification
4 %	111 7440	SAL-T 4		X
6 %	111 6453	SAL-T 6		X
11 %	111 0930	SAL-T 11	X	X
23 %	260 0960	SAL-T 23		X
33 %	111 0932	SAL-T 33	X	X
43 %	260 0961	SAL-T 43		X
53 %	111 0934	SAL-T 53	X	X
58 %	260 0189	SAL-T 58	X	X
75 %	111 0936	SAL-T 75	X	X
84 %	111 9886	SAL-T 84	X	X
90 %	111 0938	SAL-T 90	X	X
97 %	111 9887	SAL-T 97	X	X
100 %	260 1619	SAL-T 100		X

SAL-T/C salt standards

with European recognised certificate

Moisture standards based on saturated salt solutions in plastic tablets, with a moisture-permeable membrane. Each salt is delivered with UKAS certificate, in a closable container

Consult the instruction manual of the instrument to see which points can be calibrated. The other SAL-T can be used for verification.

humidity values	P/N	Name	Calibration	Verification
6 %	111 7000	SAL-T/C 6		
11 %	111 1056	SAL-T/C 11	X	X
33 %	111 1057	SAL-T/C 33	X	X
53 %	111 1060	SAL-T/C 53	X	X
58 %	260 0190	SAL-T/C 58	X	X
75 %	111 1063	SAL-T/C 75	X	X
84 %	260 0276	SAL-T/C 84	X	X
90 %	111 1065	SAL-T/C 90	X	X
97 %	111 9981	SAL-T/C 97	X	X



SAL-T/C salt standards

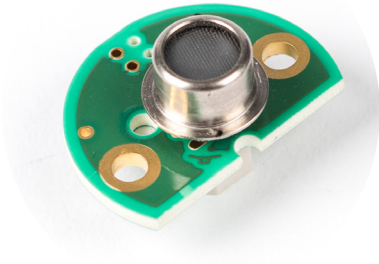


SD card
260 0193

SD card

SD card for saving all measurement data and protocols. The data can be evaluated by spreadsheet programs. Memory: 8GB.

CM-2 Measuring cell



CM-2 Measuring cell
111 9983

Interchangeable intelligent and factory-calibrated measuring cell system based on Novasina „Novalyte“ technology. The active heating prevents condensation on the moisture measuring element.

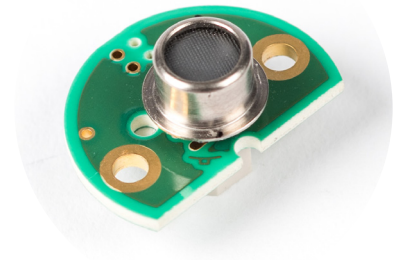
Caution: Never touch the front area of the measuring cell with your hands or any other object!

CM-3 Measuring cell

Interchangeable intelligent and factory-calibrated measuring cell system based on Novasina „Novalyte“ technology. The active heating prevents condensation on the moisture measuring element.

This special sensor won't be affected by alcohol (ethanol)

Caution: Never touch the front area of the measuring cell with your hands or any other object!

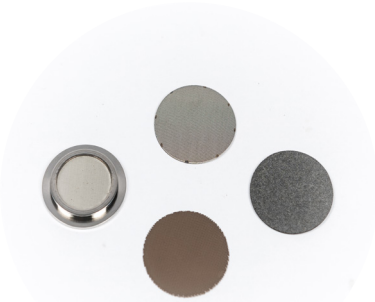


CM-3 Measuring cell
111 1615

Special protective filter to protect the measuring cells

Various filters to protect the sensor against aggressive vapours, alcohols, glycols, etc.

For detailed information on the most suitable filter for your application, please consult the Novasina filter data sheet.

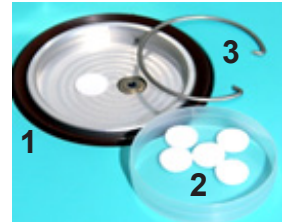


Special protection filters

- 111 1001 -> eVC-21 (10 pcs)
- 111 1003 -> eVC-26 (10 pcs)
- 111 0995 -> eVALC (1 pcs)
- 111 7212 -> Redox (2pcs)

Spare parts for measuring head LabStart-aw / LabSwift-aw / Lab-Touch-aw

- 1 Sealing ring
- 2 pre-filters white, 5 pcs.
- 3 Tension ring for fixing protection filters



Spare parts for measuring head

- 260 0211 Sealing ring: 1
- 260 0183 Prefilter white: 2
- 260 0210 Tension ring: 3

LabMaster-aw neo

Water Activity Measurement

THE talented all-rounder

Top water activity measuring device with technological lead, perfect for the daily routine determination of water activity in QA laboratories of food and pharmaceutical companies. This measuring instrument also provides support in the investigation of the causes of product spoilage, texture changes or rancidity.

Outstanding measuring instrument for effortless and worry-free water activity measurement and documentation, including 21CFR11 compliant audit trail and user management, automatic verification or adjustment, contactless salt standard identification by RFID and a fast mode that guarantees results within 10 minutes. Additional features such as full thermostatisation in the range of 0-60°C, measuring range from 0.0300-1.000aw and a simpler protective filter handling by magnet fixing complete the LabMaster-aw neo. Of course also conformable with AOAC, ISO, USP and other standards/standards



Meter Specifications

	LabMaster-aw neo
Versions	N/A
Power supply	> 100... 260 VAC > Power consumption: > Maximum: 42W > Normal operation: < 15W > Stand-By: < 0.1W
Display	7" capacitive Touchscreen
Communication	> RS-232 and USB 2.0 for PC > RS-232 for printer Epson TM-U220D > SD card > XML to LIMS
Housing	> Hybrid of painted steel housing and PUR > Weight: approx. 10kg > Dimensions (LxWxH)= 423x260x186mm Height with open ceiling: 462mm
Measuring chamber volume	12mL
Dimensions sample cups	diameter 40mm x Höhe 13mm
Protection class	IP20
21CFR 11	> 21CFR11 compliant Audit Trail > 21CFR11 compliant user management

Measurement Specifications

	parameter	
	Water activity	Temperature
Measuring principle	Electrolytic	Surface infrared sensor
Measuring range	0.0300...1.0000aw*	0...60°C (32...140°F)
Adjustment range	0.0400...1.0000aw*	N/A
Resolution	0.0001aw	0.01°C
Accuracy	+/-0.0030aw within the adjustment range	+/-0.1°C
Precision	+/-0.0020aw within the adjustment range	+/-0.1°C
Repeatability	+/-0.0010aw within calibration reange	N/A
Temperature control	Programmable measuring temperature in the range of 0...60.00°C (32...140°F)	
Adjustment point (%rH)	4%, 6%, 11%, 33%, 53%, 58%, 75%, 84%, 90%, 97%, 100% Salt standards are equipped with RFID chips to ensure error-free identification by the LabMaster-aw neo.	

Scope of Application:





LabMaster-aw neo (ENS)

- LabMaster-aw neo with awSens-ENS
- Measuring instrument LabMaster-aw neo
- 7 x SAL-T: 11,33,58,75,84,97 and 100 % rH
- 1 x service tool
- 40 x ePW sample dishes
- USB / RS-232 interface cable
- USB stick with operating instructions
- Factory calibration certificate
- SD Memory Card 8GB
- power cable

LabMaster-aw neo (ENS)

260 1500

LabMaster-aw neo (ELS)

- LabMaster-aw neo with awSens-ELS
- Measuring instrument LabMaster-aw neo
- 7 x SAL-T: 11,33,58,75,84,97 and 100 % rH
- 1 x service tool
- 40 x ePW sample dishes
- USB / RS-232 interface cable
- USB stick with operating instructions
- Factory calibration certificate
- SD Memory Card 8GB
- power cable



LabMaster-aw neo (ELS)

260 1700



Special protective filter to protect the measuring cells

Various filters to protect the sensor against aggressive vapours, alcohols, glycols, etc.

For detailed information on the most suitable filter for your application, please consult the Novasina filter data sheet.

Special protection filters

260 1662 -> eVC-18 (1 pcs)

206 1724 -> eVC-18/eVALC (1 pcs)

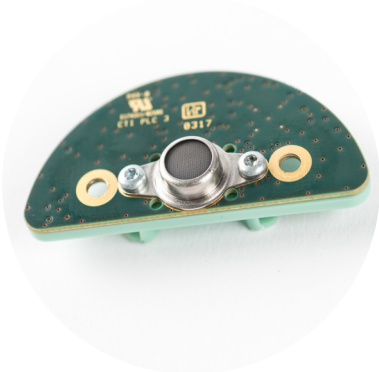
260 1330 -> Redox (1 pcs)

260 1620 -> mechanical pre-filter (1 pcs)

aw-Sens-ENS

Interchangeable intelligent and factory-calibrated measuring cell system based on Novasina „Novalyte“ technology. The active heating prevents condensation on the moisture measuring element.

Caution: Never touch the front area of the measuring cell with your hands or any other object!

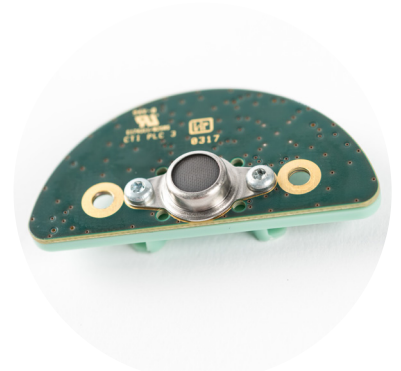


aw-Sens ENS
260 1609

aw-Sens-ELS

Interchangeable intelligent and factory-calibrated measuring cell system based on Novasina „Novalyte“ technology. The active heating prevents condensation on the moisture measuring element. This special sensor won't be affected by alcohol- (ethanol).

Caution: Never touch the front area of the measuring cell with your hands or any other object!



aw-Sens ELS
260 1615

Service Tool

Tool for easy filter replacement and removal of the sample insert for sorption isotherms.



Service Tool
260 1617

SAL-T 100 %

Empty SAL-T standard with RFID tag for adjustment and calibration at 100 % rH with pure water



SAL-T 100 standard
260 1619



SI set

Set for the recording of an adsorption and desorption isotherm with the LabMaster-aw neo

SI-Set
260 1621

ePW Dispenser

5 dispensers with 20 pcs. each Disposable sample trays and a holder for the dispensers



ePW Dispenser
260 1584



Wireless Barcode Scanner LabMaster-aw neo

For scanning Barcode batch-ID before starting a measurement for full data integrity. Set consists of one Wireless Barcode Scanner and a bluetooth communication board.

Wireless Barcode Scanner
260 1698



SAL-T salt standards

SAL-T salt standards

Moisture standards based on saturated salt solutions in plastic tablets, with a moisture-permeable membrane. Each salt is delivered in a well closable container.

Consult the instruction manual of the instrument to see which points can be calibrated. The other SAL-T can be used for verification.

humidity values	P/N	Name	Calibration	Verification
4 %	111 7440	SAL-T 4	X	X
6 %	111 6453	SAL-T 6	X	X
11 %	111 0930	SAL-T 11	X	X
23 %	260 0960	SAL-T 23		X
33 %	111 0932	SAL-T 33	X	X
43 %	260 0961	SAL-T 43		X
53 %	111 0934	SAL-T 53	X	X
58 %	260 0189	SAL-T 58	X	X
75 %	111 0936	SAL-T 75	X	X
84 %	111 9886	SAL-T 84	X	X
90 %	111 0938	SAL-T 90	X	X
97 %	111 9887	SAL-T 97	X	X
100 %	260 1619	SAL-T 100	X	X

SAL-T/C salt standards

with European recognised certificate

Moisture standards based on saturated salt solutions in plastic tablets, with a moisture-permeable membrane. Each salt is delivered with UKAS certificate, in a closable container

Consult the instruction manual of the instrument to see which points can be calibrated. The other SAL-T can be used for verification.

humidity values	P/N	Name	Calibration	Verification
6 %	111 7000	SAL-T/C 6	X	X
11 %	111 1056	SAL-T/C 11	X	X
33 %	111 1057	SAL-T/C 33	X	X
53 %	111 1060	SAL-T/C 53	X	X
58 %	260 0190	SAL-T/C 58	X	X
75 %	111 1063	SAL-T/C 75	X	X
84 %	260 0276	SAL-T/C 84	X	X
90 %	111 1065	SAL-T/C 90	X	X
97 %	111 9981	SAL-T/C 97	X	X



SAL-T/C salt standards